

R2-A60F

Alpine Next-Gen R-Series 4-Channel Amplifier



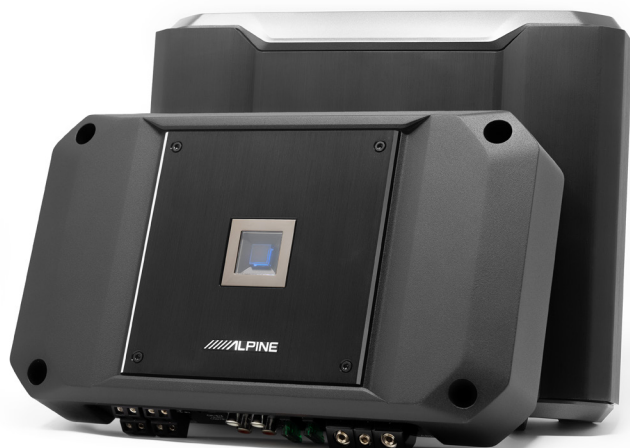
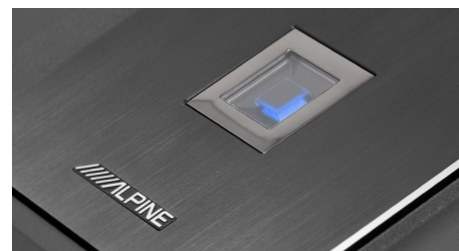
PRODUCT OVERVIEW

Experience the impressive power and exceptional performance of the Next-Generation R-Series R2-A60F 4-Channel Amplifier, now certified for Hi-Res Audio Playback.

PRODUCT FEATURES

Hi-Res Certified – The Next-Generation R-Series Amplifiers are Hi-Res Audio Certified and able to reproduce up to 45kHz frequency response. This ultra-wide bandwidth brings music even closer to the original source while the classic R-Series design maintains the “loud and fun” performance quality that long-time fans have come to enjoy.

Reduced Footprint - The R2-A60F features a reduced footprint that's 15% smaller than the previous model (R-A60F), making it easier than ever to install in most vehicle applications while still getting the same powerhouse performance.



Simplified Installation – Intentional designs were made to the amplifier that consolidated all speaker connections to one side of the amplifier for easy access. Amplifier controls were relocated to the top of the amplifier under a removable plate for convenient access to gain and crossover controls. To simplify the installation process, mounting “feet” are integrated onto the chassis of the amplifier.

Trickle-down Tech – Using “trickle-down” technology, inspired design, and performance cues from the Ultra-High-Resolution AlpineF#1Status systems, the Next-Generation R-Series Amplifiers feature High-Resolution Playback capabilities that will take this legendary system to the next level in sound performance.

R2-A60F

Alpine Next-Gen R-Series 4-Channel Amplifier



MAIN FEATURES

- Hi-Res Audio Certified (Up to 45kHz)
- 4-Channel Amplifier
- Alpine's Class D Amplifier Circuit
- Reduced Footprint (*15% smaller vs previous model*)
- One-Sided Terminal Layout
- Top Panel Sound Controls
- Optional Remote Bass Knob Compatible (*required RUX-KNOB.2 or RUX-H01, sold separately*)

TECH SPECS

- **Dimensions:** 11.1" W x 2.17" H x 6.5" D
- **Power Rating:** 14.4V, $\leq 1\%$ THD +N
- **Power Output:** 100W x 4 @ 4 Ω , 150W x 2 @ 2 Ω
- **Bridged Power:** 300W x 2 @ 4 Ω
- **S/N Ratio:** >80dB
- **Frequency Response:** 10Hz – 45kHz
- **Damping Factor:** >100

WHAT'S IN THE BOX

- R2-A60F 4-Channel Amplifier
- Owner's Manual
- "Birth Sheet" that certifies by measurement the actual power of the amplifier in the box
- (x4) Screws for amplifier mounting to the vehicle
- (x3) Allen wrench for amplifier connection and installation (2mm, 2.5mm, 3mm)
- Alpine Registration Card
- Alpine Limited Warranty Sheet
- Installation Guide

